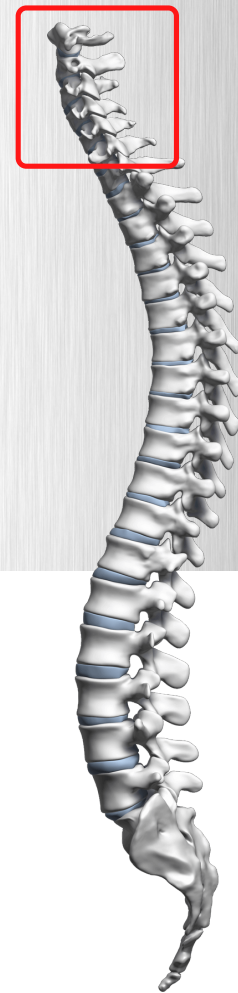


# CERVICAL INTERBODY SOLUTIONS



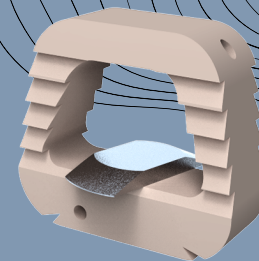
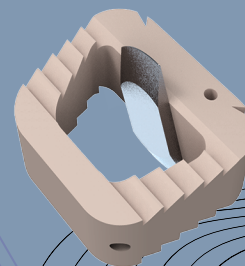
# SPINAL STABILISATION

## CERVICAL BLADED PEEK

### CAGE & ANATOMICAL

### SURFACE

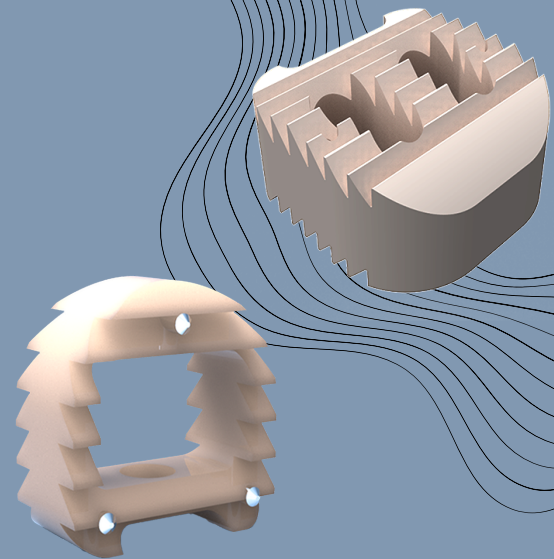
REFERENCE	HEIGHT (mm)	DEPTH (mm)	WIDTH (mm)
MSFX-CPCB(H)1214	4, 5, 6, 7, 8	12	14
MSFX-CPCB(H)1414	4, 5, 6, 7, 8	14	14
MSFX-CPCB(H)1216	4, 5, 6, 7, 8	12	16



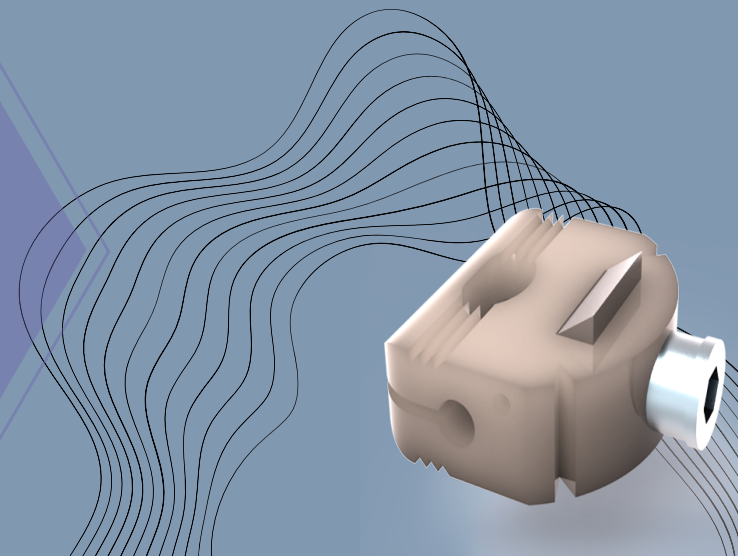
# SPINAL STABILISATION

## CERVICAL PEEK CAGE & ANATOMICAL SURFACE

(0°, 5°, 10°)



REFERENCE	HEIGHT (mm)	DEPTH (mm)	WIDTH (mm)
MSFX-CPCS(H)1214	4, 5, 6, 7, 8, 9, 10, 11	12	14
MSFX-CPCS(H)1414	4, 5, 6, 7, 8, 9, 10, 11	14	14
MSFX-CPCS(H)1216	4, 5, 6, 7, 8, 9, 10, 11	12	16
MSFX-CPCS(H)1416	4, 5, 6, 7, 8, 9, 10, 11	14	16
MSFX-CPCS(H)1618	4, 5, 6, 7, 8, 9, 10, 11	16	18
MSFX-CPCS(H)1820	4, 5, 6, 7, 8, 9, 10, 11	18	20



# MOBILE CERVICAL DISC PROSTHESIS

REFERENCE	HEIGHT (mm)	DEPTH (mm)	WIDTH (mm)
MSFX-CD(H)12-14	4, 5, 6, 7, 8, 9	12	14
MSFX-CD(H)14-14	4, 5, 6, 7, 8, 9	14	14
MSFX-CD(H)12-16	4, 5, 6, 7, 8, 9	12	16

